

## Horn Speaker 1000811

### Instruction sheet

03/15 SP/MH/UD



- 1 Rod
- 2 4-mm safety socket
- 3 Speaker outlet

### 1. Safety instructions

Safe operation of the equipment is guaranteed as long as it is used as specified. Safety cannot, however, be assured if the lead or the rods are not used correctly or are treated without due care.

If it is suspected that the equipment can no longer be operated safely (e.g. when there is visible damage), the equipment must be taken out of use immediately.

- Use this equipment in dry rooms only.
- Do not exceed the power rating of 10 W when using the loudspeaker.

### 2. Technical data

Frequency range:	100 Hz...20000 Hz
Power rating:	10 W
Impedance:	8 Ohm
Stem diameter:	10 mm
Dimensions	100x135x80 mm <sup>3</sup> approx.
Weight:	660 g approx.

### 3. Description

This horn loudspeaker can be used to approximate a point source of sound and is better suited for acoustic experiments than large conventional box loudspeakers. For excitation of a Kundt tube, the outlet of the speaker can be directly placed at the end of the tube.

#### 4. Sample Experiments

##### Kundt's tube

Recommended accessories:

1 Function generator FG 100  
(@230 V) 1009957

or

1 Function generator FG 100  
(@115 V) 1009956

1 Stand base 1001046

1 Kundt's tube 1000814

#### 5. Storage, cleaning and disposal

- Store the equipment in a clean, dry and dust-free location.
- Do not use aggressive cleaning agents or solvents to clean the equipment.
- Use a soft, damp cloth for cleaning purposes.
- The packaging should be disposed of at local recycling points.
- Should you need to dispose of the equipment itself, never throw it away in normal domestic waste but use containers specifically set aside for electrical waste. Local regulations will apply.

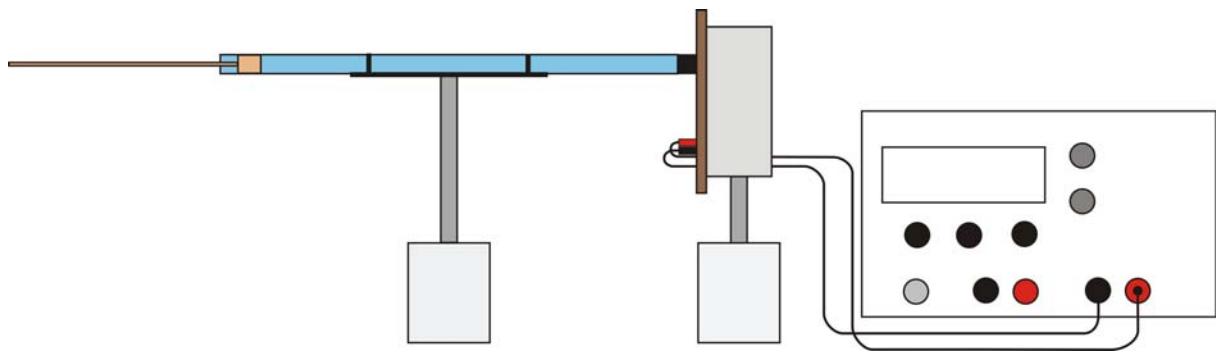
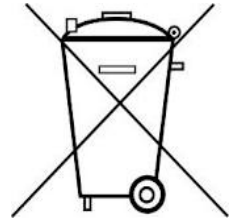


Fig. 1 Experiment set-up for Kundt's tube.